

1. finding the location



2. fixing down the shower base



3. fixing down the other flooring boards

## How To create a Step-in Shower WITHOUT cutting into the floor



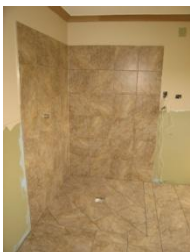
4. waterproofing and reinforcing all joints



**Tiled shower - same level as floor**



5. waterproofing the shower area



8. tiling the shower base



7. Tiling the floor around shower



6. Tiling the walls

**NEW ZEALAND MADE**

by Tiles and More Ltd., Gisborne, Ph/Fax: 06-8683491